

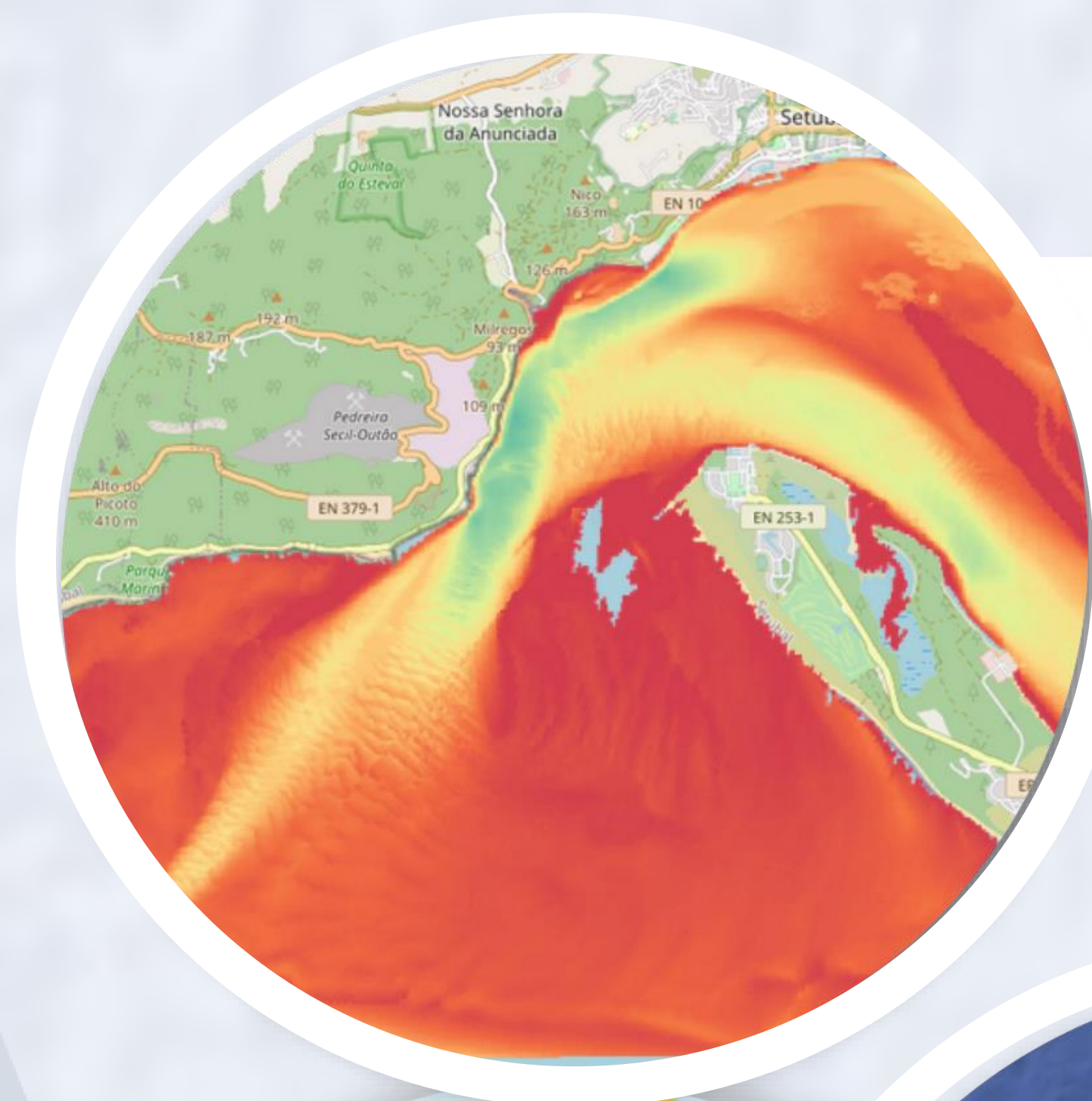
# Portuguese Hydrographic Institute Marine Spatial Data Infrastructure

## A tool to support Ocean Decade through ocean knowledge

Authors: Paulo Nunes (1), Sara Almeida (1), Telmo Dias (1), Sergio Saraiva (2), Hidrográfico + Project Team (1,2)

Affiliation: (1) Portuguese Hydrographic Institute, (2) Deimos Engenharia, SA

@ - antunes.nunes@hidrografico.pt



### BATHYMETRY

Bathymetric models for several locations. This information derives from hydrographic surveys and allows users and decision makers to know the seabed morphology. This detailed information is critical for mariners and infrastructures development.



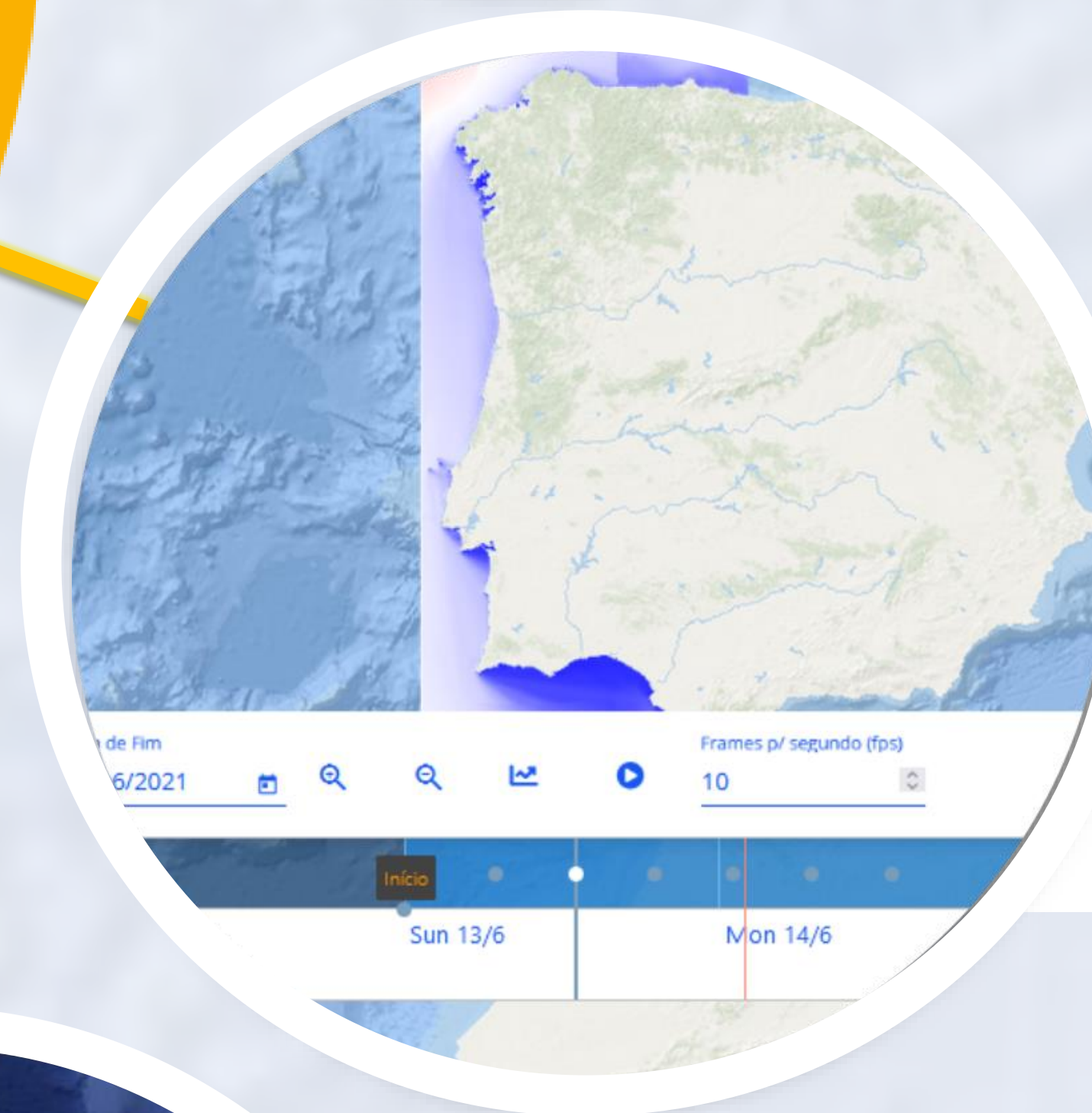
### SEA SURFACE CURRENTS

Near real-time measurements and forecasts of sea surface currents are essential for disaster management operations and for safe navigation transits.



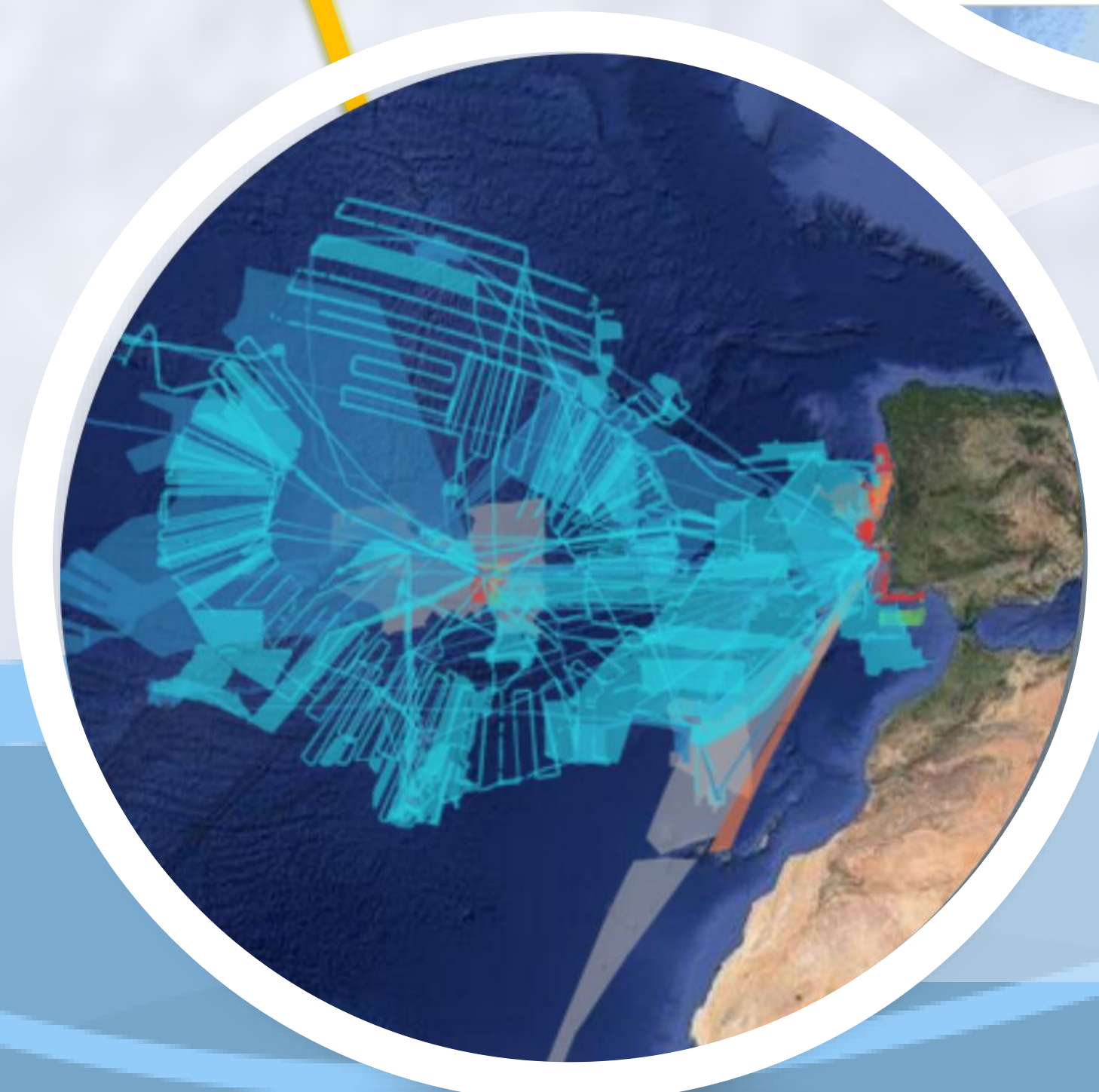
### TIDES

Tide observations and forecasts are important for seal level monitoring and relevant for all marine space users.



### SEA STATE

Observations and forecasts of sea state conditions are important for the safety of mariners and fishermen.



### CATALOGUES

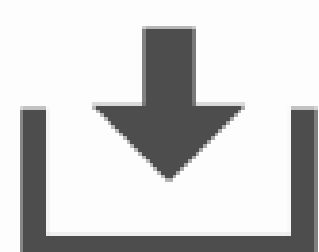
Metadata catalogues allow all MSDI users to search and find the available information through web services and at the Instituto Hidrografico scientific repositories.



SEARCH



VIEW



DOWNLOAD



ANALYTICS



WEB SERVICES



<https://geomar.hidrografico.pt>

**hidrográfico**

Marine Data and Knowledge  
to support Ocean Decade  
and a Sustainable future

Cofinanciado por:



UNIÃO EUROPEIA  
Fundo Europeu  
de Desenvolvimento Regional

Funding: POCI-02-0550-FEDER-035422